



SPECIFICATIONS

- RATING :** 2A/36VDC
 - ELECTRICAL LIFE :** 200,000 make-and-break cycles at full load
 - MECHANICAL LIFE :** 1,000,000 cycles
 - INSULATION RESISTANCE :** 1,000 MΩ min. at 500VDC
 - DIELECTRIC STRENGTH :** 2,000V RMS @ sea level
 - CONTACT RESISTANCE :** 50 mΩ max.
 - OPERATION TEMPERATURE :** -20°C~+70°C
 - TRAVEL:** About 2.0±0.20mm
 - OPERATION PRESSURE :** 4.5N±1.5N
 - INGRESS PROTECTION :** IP67
 - TORQUE :** 11.5 kgf · cm
 - THICKNESS :** 8.0mm (Max.)
- Current limiting resistor is required to limit LED forward current to 20mA.**

MATERIALS

- BUSHING :** Aluminum alloy / Stainless Steel
- BASE :** PBT (UL 94-V0)
- ACTUATOR :** PC (Translucent UL 94-V2)
- CAP :** Aluminum alloy / Stainless Steel
- SPRING :** Steel.
- SEALING :** Silicone (Translucent).
- O-Ring :** Silicone (Translucent).
- TERMINAL :** Brass ,Gold plated.
- CONTACT :** Silver alloy.
- HEX NUT :** Brass (Nickel plated).

MPB16 Pushbutton Switches



HOW TO ORDER

MODEL NO.	BODY TYPE	BUTTON TYPE	LIGHT TYPE	LED COLOR	TERMINAL SHAPE	TERMINAL PLATING	LED VOLTAGE																													
<p>MPB16</p> <p>Body type</p> <p>CA AL alloy (Natural Anodized)</p> <p>CB AL alloy (Black Anodized)</p>	<p>Button type</p> <p>R Round</p>	<p>Light type</p> <p>E Ring</p> <p>P Power logo</p>	<p>LED color</p> <table border="1" style="width: 100%; border-collapse: collapse;"> <thead> <tr> <th>ITEM NO</th> <th>COLOR</th> </tr> </thead> <tbody> <tr><td>0</td><td>Without LED</td></tr> <tr><td>1</td><td>White</td></tr> <tr><td>3</td><td>Red</td></tr> <tr><td>5</td><td>Yellow</td></tr> <tr><td>6</td><td>Green</td></tr> <tr><td>7</td><td>Blue</td></tr> <tr> <th colspan="2">DUAL COLOR LED</th> </tr> <tr><td>A</td><td>Red&Green</td></tr> </tbody> </table>	ITEM NO	COLOR	0	Without LED	1	White	3	Red	5	Yellow	6	Green	7	Blue	DUAL COLOR LED		A	Red&Green	<p>Terminal shape</p> <p>J Solder terminal</p> <p>T1 Wire length 500mm</p>	<p>Terminal plating</p> <p>R Gold flash</p>	<p>Accessories</p> <table border="1" style="width: 100%; border-collapse: collapse;"> <thead> <tr> <th colspan="2">Resistance (About LED Voltage)</th> </tr> </thead> <tbody> <tr><td>0</td><td>Without Resistance</td></tr> <tr><td>3V</td><td>LED input 3 VDC,47Ω * Red/Yellow led type only</td></tr> <tr><td>6V</td><td>LED input 6 VD,180Ω</td></tr> <tr><td>12V</td><td>LED input 12 VDC,470Ω</td></tr> <tr><td>24V</td><td>LED input 24 VDC,1000Ω</td></tr> </tbody> </table> <p>※ ohms value of resistance tolerance: ±5%</p>	Resistance (About LED Voltage)		0	Without Resistance	3V	LED input 3 VDC,47Ω * Red/Yellow led type only	6V	LED input 6 VD,180Ω	12V	LED input 12 VDC,470Ω	24V	LED input 24 VDC,1000Ω
ITEM NO	COLOR																																			
0	Without LED																																			
1	White																																			
3	Red																																			
5	Yellow																																			
6	Green																																			
7	Blue																																			
DUAL COLOR LED																																				
A	Red&Green																																			
Resistance (About LED Voltage)																																				
0	Without Resistance																																			
3V	LED input 3 VDC,47Ω * Red/Yellow led type only																																			
6V	LED input 6 VD,180Ω																																			
12V	LED input 12 VDC,470Ω																																			
24V	LED input 24 VDC,1000Ω																																			
<p>MPB16</p> <p>Body type</p> <p>A2 Stainless (Natural)</p> <p>A3 Stainless (Natural),Flat</p>	<p>Button and light type</p> <p>HE Ring,High</p> <p>FP Power logo,Flat</p>																																			

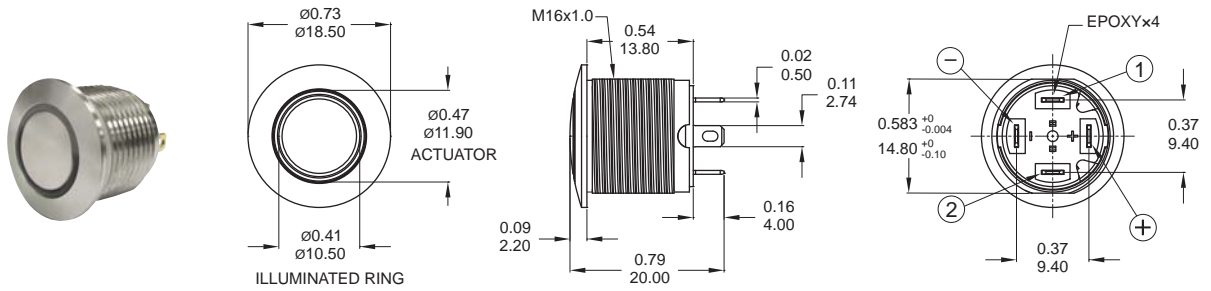
EXAMPLE:
 MPB16-CARE-0-JR-0 (Without LED)
 MPB16-CARE-□-JR-□V
 LED color LED voltage

MPB16 Series

16mm Metal Pushbutton Switches

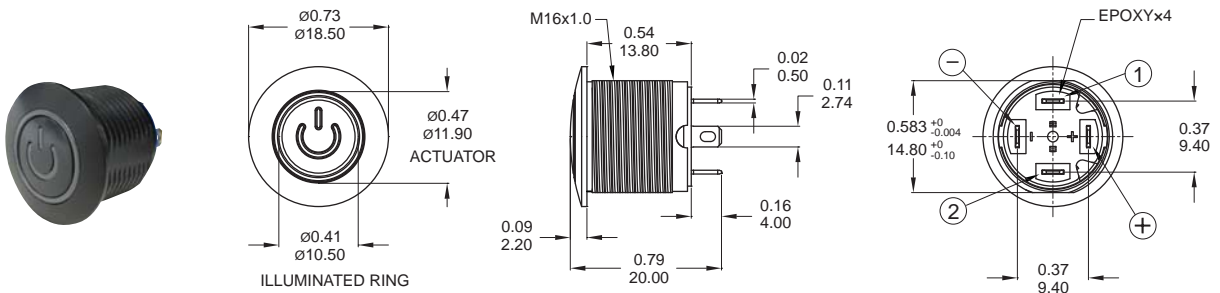
DIMENSION

E Ring



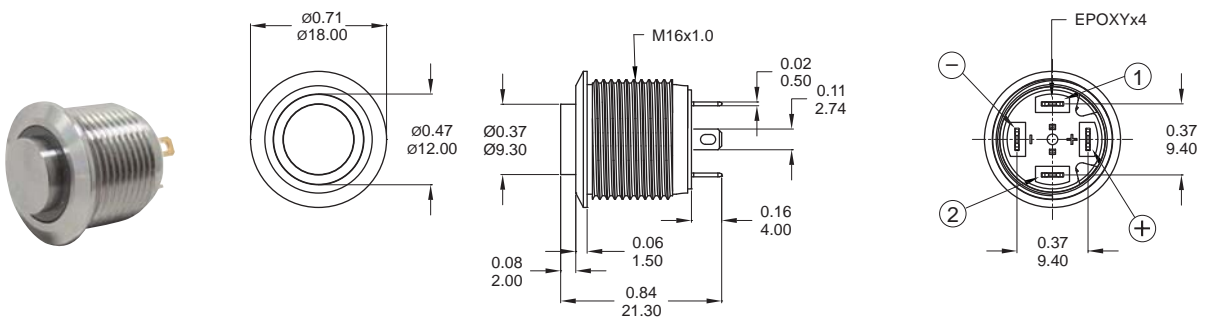
Part No. Shown : MPB16-CARE-□-JR-0V

P Power logo



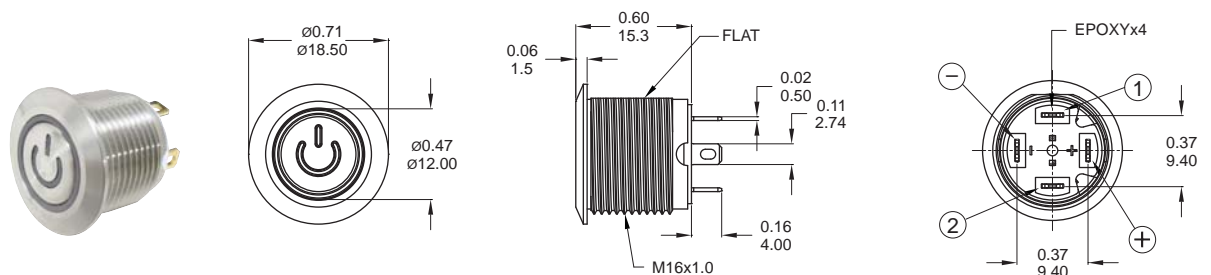
Part No. Shown : MPB16-CBRP-□-JR-0V

HE Ring



Part No. Shown : MPB16-A2HE-□-JR-0V

FP Power logo



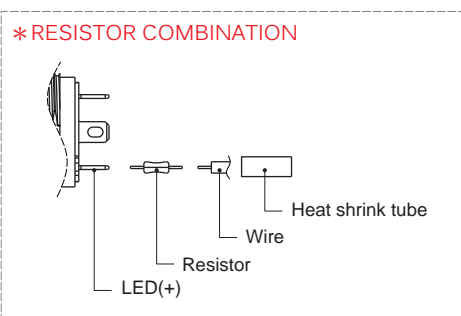
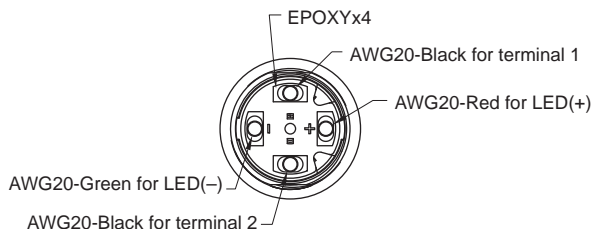
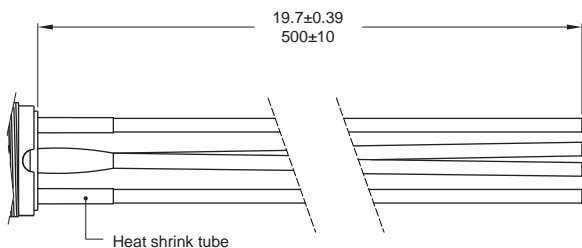
Part No. Shown : MPB16-A3FP-□-JR-0V



MPB16
Pushbutton Switches

T1

※Wire=Multi-wire lead AWG20,section 0.6mm²,UL approved (Black / Red / Green)

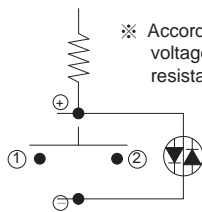


SCHEMATIC / PANEL CUTOUT / HARDWARE

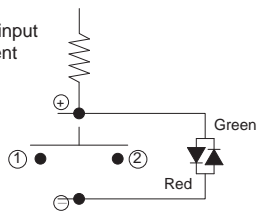
SCHEMATIC



Without Led



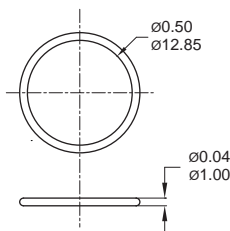
Single Color Led



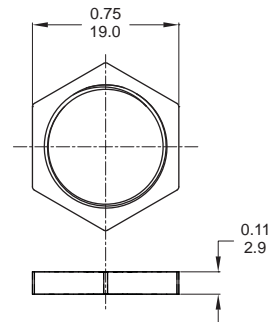
Dua Color Led

HARDWARE

O-RING

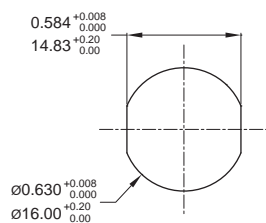


M16 NUT

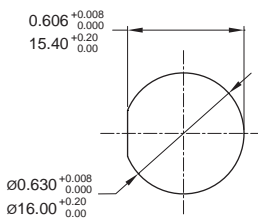


PANEL CUTOUT

CA/CB Type



A3 Type



A2 Type

