



# MPB25 Series

25mm Metal Pushbutton Switches

## CIRCUIT

POSITION 1

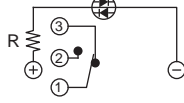


POSITION 2

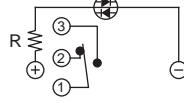


Without LED (1 Pole)

POSITION 1

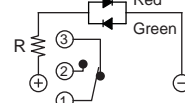


POSITION 2

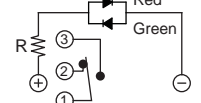


Single Color Led (1 Pole)

POSITION 1

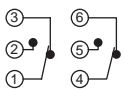


POSITION 2

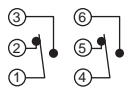


Dual Color Led (1 Pole)

POSITION 1

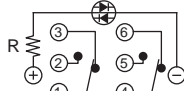


POSITION 2

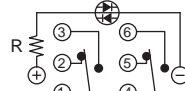


Without LED (2 Poles)

POSITION 1

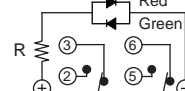


POSITION 2

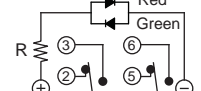


Single Color Led (2 Poles)

POSITION 1



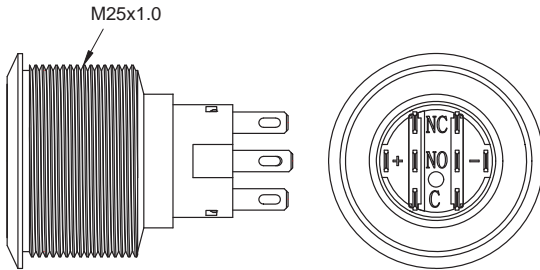
POSITION 2



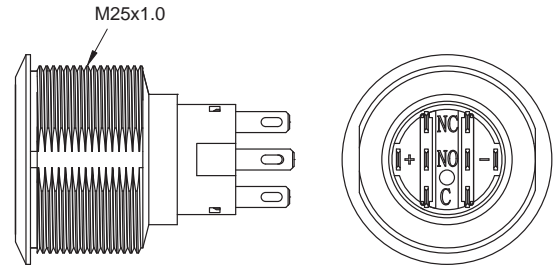
Dual Color Led (2 Poles)

## BODY TYPE

A0/C3 Body

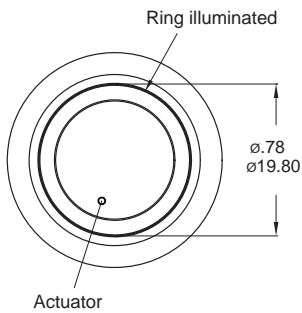


D0 Body (Flat)

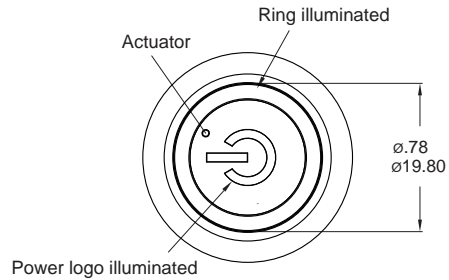


## LIGHT TYPE

E Ring (Moveable)



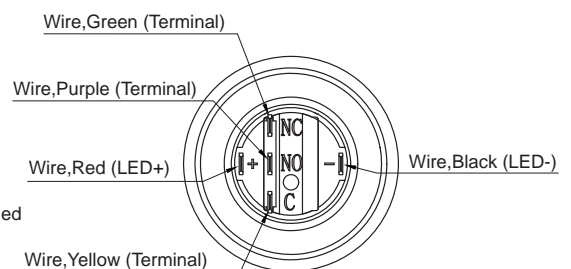
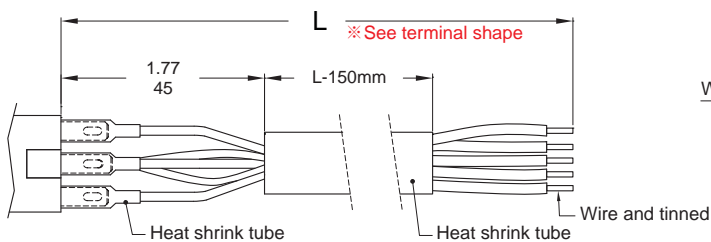
E3 Ring+Power logo



\* Only for D0 body type.

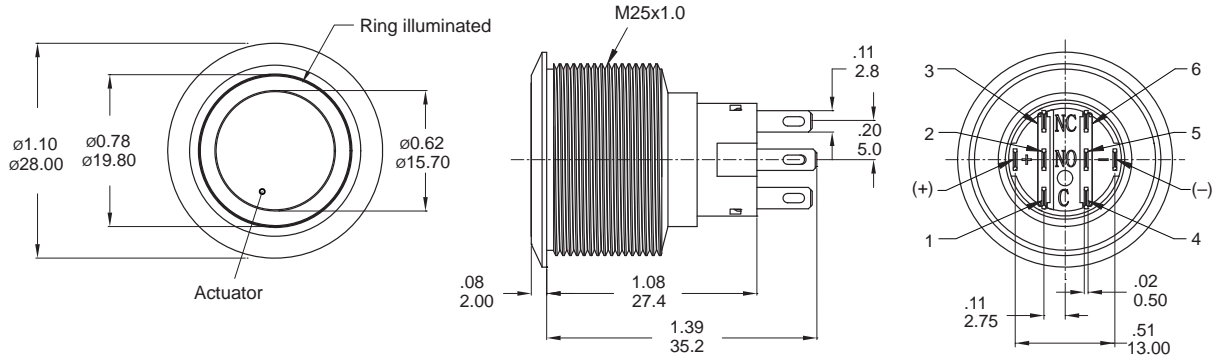
## Wire (Flying lead Terminals)

※ Wire=UL 3385,18AWG,300V(Black/Yellow/Green/Red/Purple)



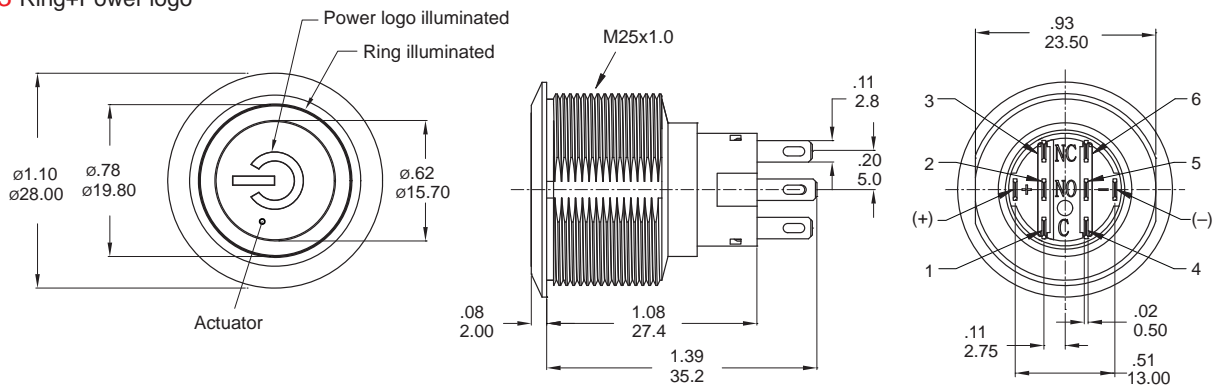
## LIGHT TYPE

### E Ring (Moveable)



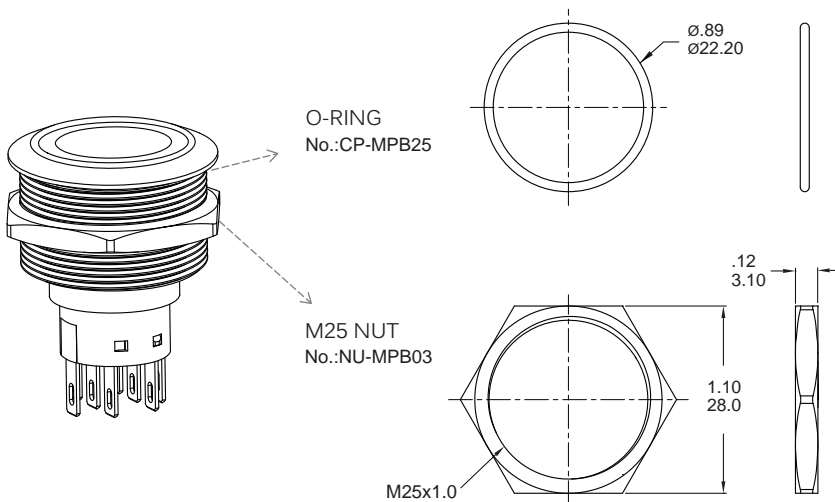
Part No. Shown : MPB25-A0F2□E-□□-JQ

### E3 Ring+Power logo



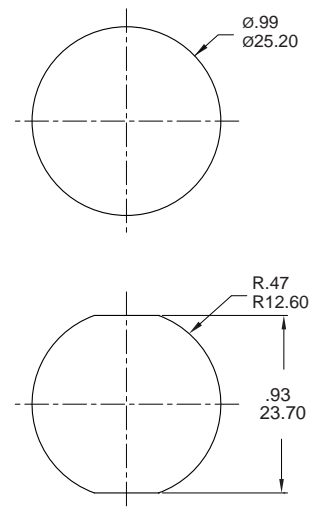
Part No. Shown : MPB25-D0F2□E3-□□-JQ

### ASSEMBLED VIEW



### PANEL MOUNTING

Max. Panel thickness: 10.0mm [.39]



### O-RING INSTALLATION

Proposal	In front of the panel	Behind the panel
Installation Diagram		

