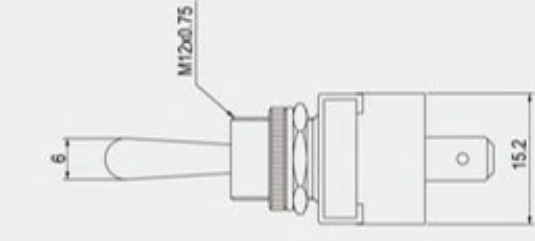
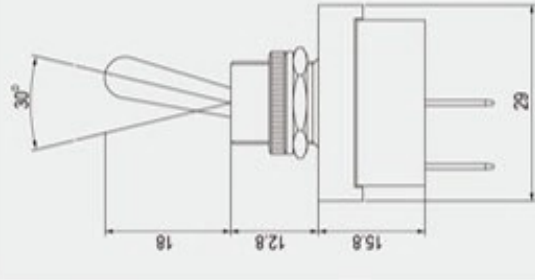
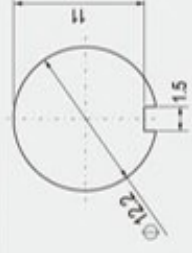


R13-25



Rating	10A 125V AC 6A 250V AC
Contact resistance	50mΩ Max
Insulation resistance	DC 500V 100MΩ Min
Dielectric strength	AC 1500V 1 minute
Cut-out	



6 mm max

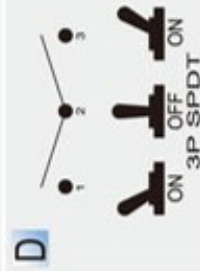
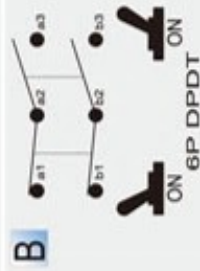
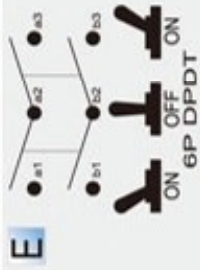
FEATURES

- * MATERIAL: Metal lever and bushing are nickel plated metal. Frame is metal plated steel. Terminals are silver plated brass. Plastic lever is ABS (UL flame: 94V-2). Base is phenolic.
- * Indicator plate and waterproof boot (only for lever #2) are optional.



R13-25

FUNCTION



LEVER



TERMINAL

0 1	.250" SQ
0 5	SO

For A.C. only

